

George Washington Bridge/ Palisades Interstate Park Bicycle/Pedestrian Path

Transportation Alternatives, North Jersey Bicycle Touring Club

with the New Jersey Bicycle Advisory Council, Tri-State Transportation Campaign, Regional Plan Association, Central Jersey Bicycle Club,

New Jersey Department of Environmental Protection, Metropolitan Waterfront Alliance

Transportation Alternatives
115 W. 30th Street
New York, NY 10001
212-629-8080
www.transalt.org
newjersey@transalt.org

Overview of the Region

New Jersey

Ft. Lee

Palisades Interstate Park

Edgewater

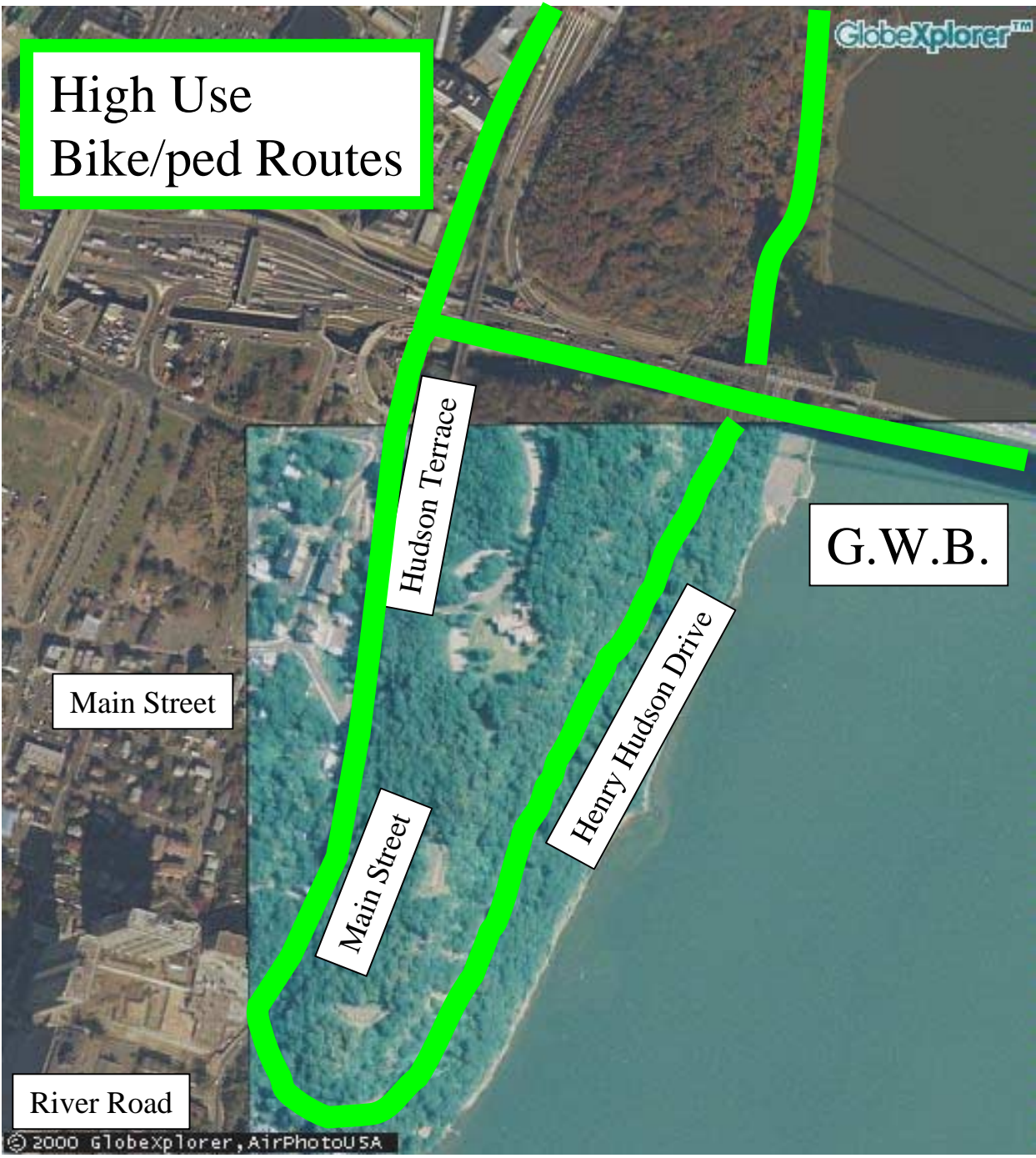
George Washington Bridge

Hudson River Greenway

New York



High Use
Bike/ped Routes



Main Street

Main Street

Hudson Terrace

Henry Hudson Drive

River Road

G.W.B.

Travel between GWB and PIP

- Popular cycling/walking route.
- Used by thousands of recreational cyclists and commuters per week.
- Used by hundreds of pedestrians per day.
- The only bike/ped crossing between Manhattan and N.J.
- The nearest Hudson River bike/ped crossing is 35 miles away.

Dangerous Conditions

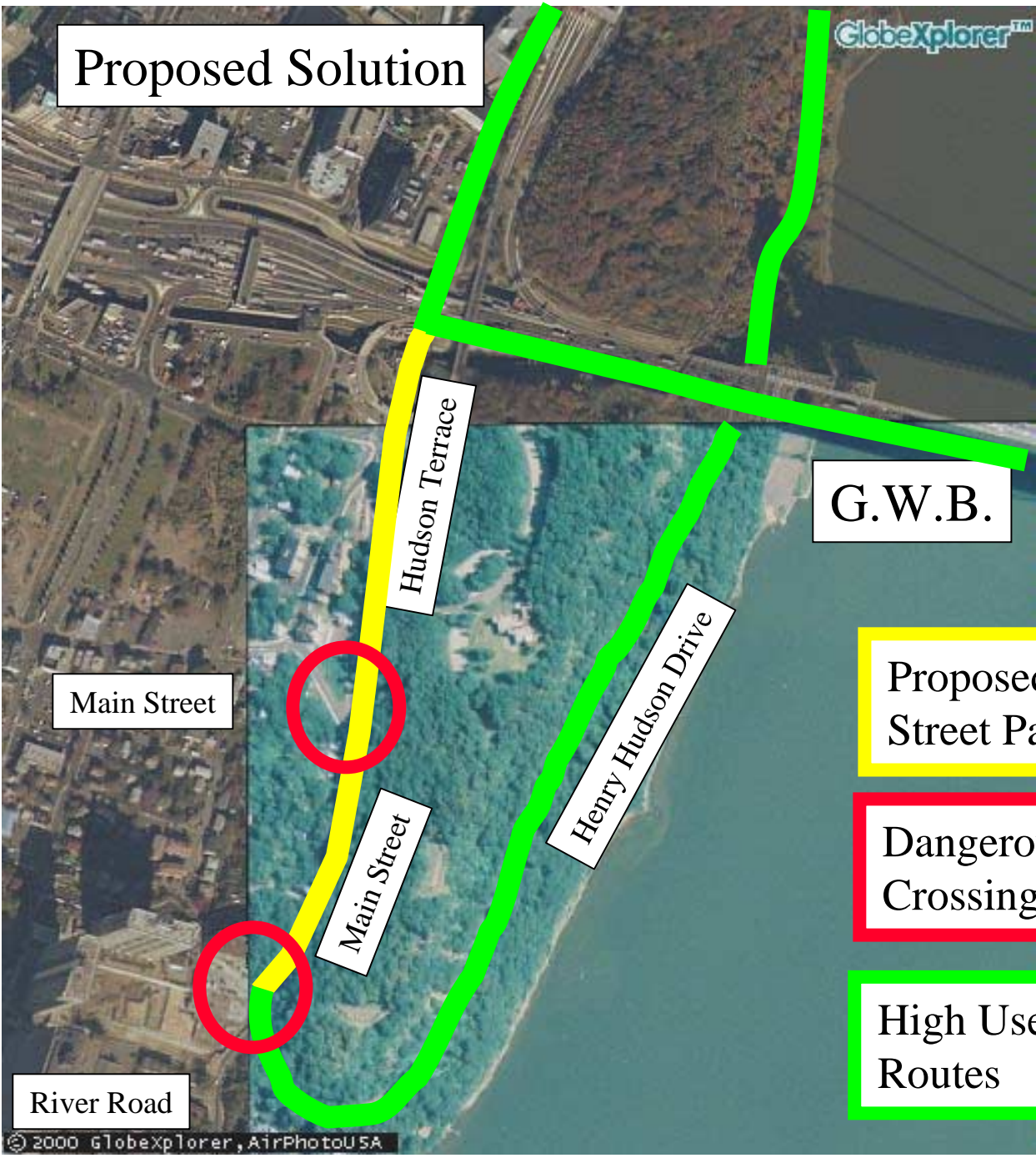
- Two dangerous intersections.
- No signals.
- Congested.
- Narrow.
- Poor visibility.
- Speeding.

The Solution

- A bicycle & pedestrian path from George Washington Bridge bike/ped path to Henry Hudson Drive in the Palisades Interstate Park.
- On the East side of Hudson Terrace and Main Street.

Proposed Solution

GlobeExplorer™



Main Street

Hudson Terrace

Henry Hudson Drive

Main Street

River Road

G.W.B.

Proposed Off-Street Path

Dangerous Crossings

High Use Cycling Routes



Proposed Solution

Proposed Off-Street Path

Dangerous Crossings

High Use Cycling Routes

Computer Rendering of Proposed Bicycle/Pedestrian Path



Main Street
looking north

The Benefits

- Improves motorists safety and reduces obstacles.
- Removes bicyclists/pedestrians from congested arterial streets.
- Allows easy entry to Manhattan for New Jersey cyclists/pedestrians.
- Eases access to Palisades Interstate Park for New York cyclists/peds.
- Links Palisades Interstate Park with Hudson River Greenway.

Property owners along the proposed path

- Palisades Interstate Park Commission.
- Port Authority of New York and New Jersey.